
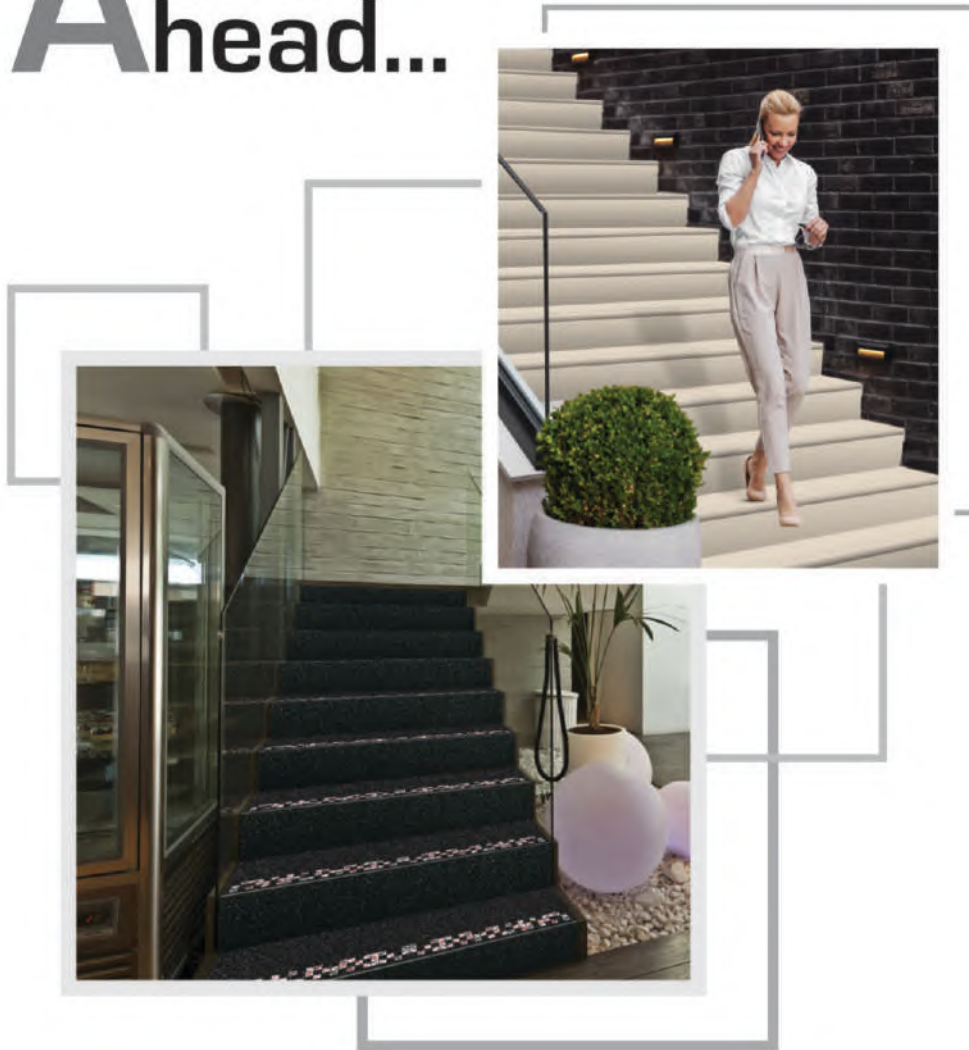


DECORATE YOUR 
DREAM HOUSE



One Step Ahead...



**Vitrified
Step & Riser Tiles**

STEP & RISER

READY TO INSTALL VITRIFIED STEP & RISER

FEATURES & BENEFITS

Concepts for Designing

Step & Riser by RUDRA are available in Different designs and colors. As High-Quality Tiles, They meet the technical Requirements of Different standards for the Production of stairs. The comprehensive concepts comprising basic, Decor and functional tiles can be used for a durable and aesthetically pleasing design of the entire indoor & Outdoor stair area.

Safety for Senior Citizens, Physical Disables and Children

Safety is always the number-one priority. It is safe enough for senior citizens, physical disables and children. In addition to slip resistance in compliance with the applicable standards, Step Riser Vitrified tiles offer particular durability and also easy-care properties. These full-bodied tiles come with bull nosing and tread lines that make them skid-resistant and much more safer than conventional stairs.

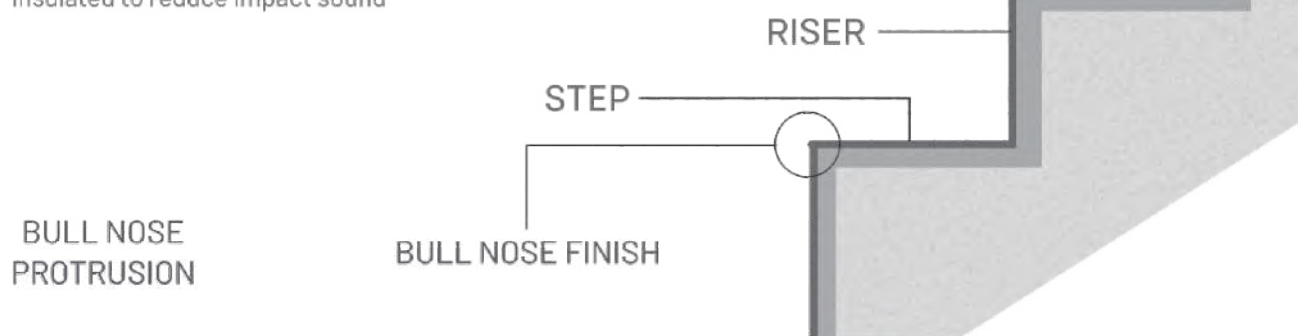
Long Lasting & Easy Maintenance

Step & Riser are full-bodied vitrified tiles, which means they absorb very low water and are impervious to weather or wear and tear induced damage. Fit them and forget them for years of trouble free performance.

Easy Installation

No more handling issues. No more labour-intensive one-site installations, no more wastage costs. Rudra Step & Riser can be easily and speedily installed on site. Chipped and worn out staircases, constant need for polishing and repairs, are all things of the past.

Prefabricated stairs with bearing surface insulated to reduce impact sound





→ STEP



→ RISER

GRANITE

Variation in Shade,
Color, Density

Has to cut in sizes

Bull nosing, Half nosing
will need to done

Longer Installation time

High cost

Affected by Weather hot/cold

High Maintenance

STEP STONE

Unpack Box, No Color,
Density variation

Ready to Lay Tiles

Ready Bull nose

Easy to Install

Lower cost than granite

Impervious to weather

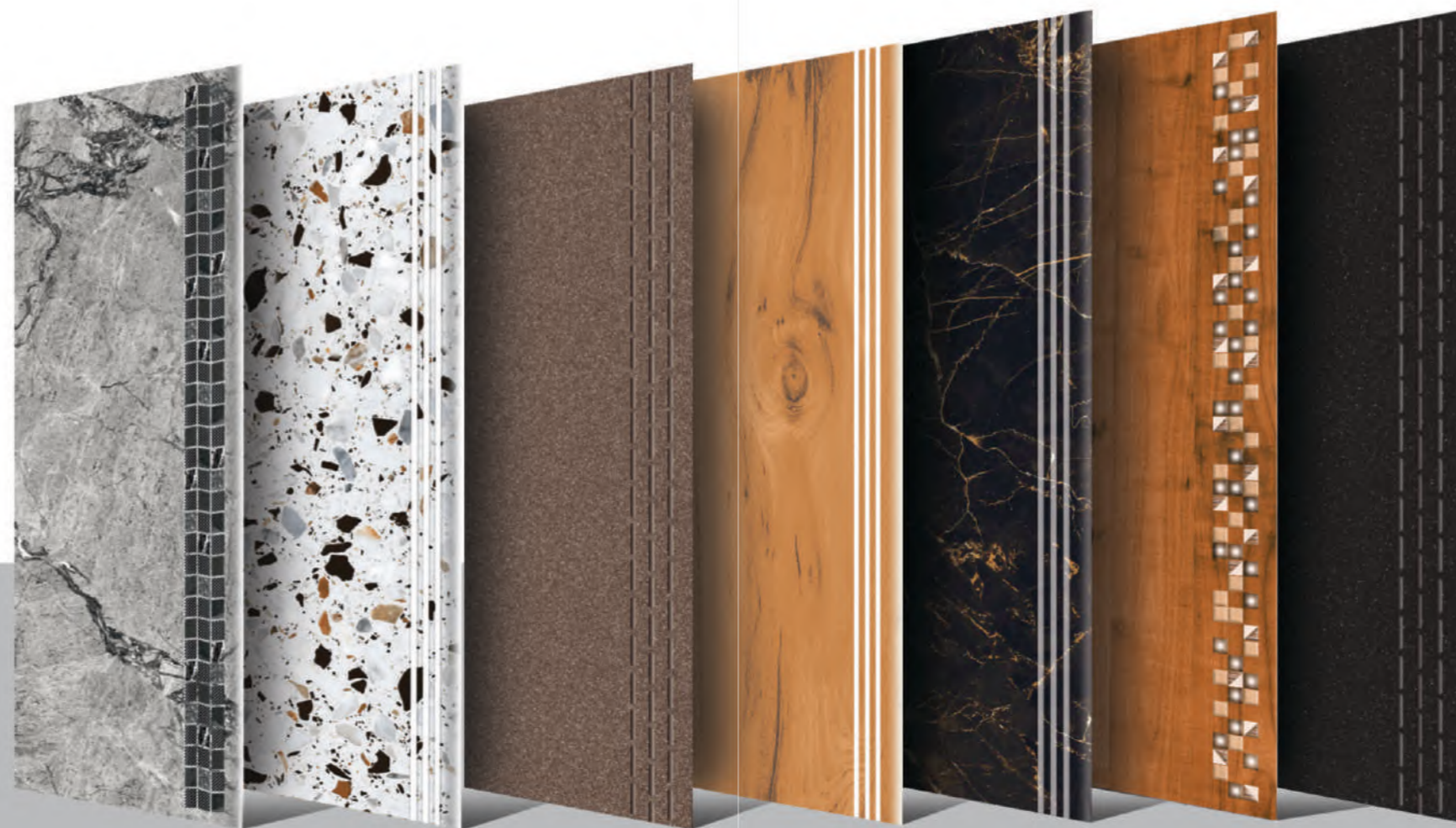
Easy to maintain

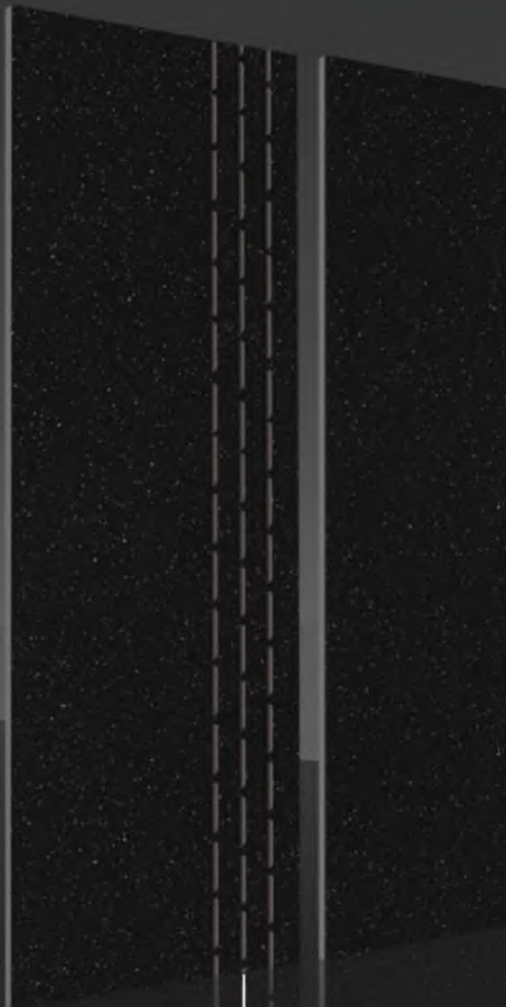
One Step Ahead...

Vitrified
Step & Riser Tiles

INDEX

| | |
|-----------------------|-----|
| 4 Feet Full Body..... | 10 |
| 4 Feet Pixel..... | 28 |
| 4 Feet Gvt..... | 48 |
| 3.25 Feet Gvt..... | 69 |
| 3 Feet Full Body..... | 88 |
| 3 Feet Volvo..... | 94 |
| 3 Feet Gvt..... | 112 |





4 F e e t

full body

STEP & RISER

STEP : 1200 X 300MM

RISER : 1200 X 200MM

FLEXURE

Revolution With Curving
Design.

STEP TILES

FULL BODY
300X1200MM

RISER TILES

FULL BODY
200X1200MM

FULL BODY

VITRIFIED
STEP & RISER

Matt Finish



201 - Galaxy Choco

STEP



RISER



STEP TILES
FULL BODY
300X1200MM

RISER TILES
FULL BODY
200X1200MM

FULL BODY
VITRIFIED
STEP & RISER

Matt Finish



202 - Jet Black

STEP



RISER



STEP TILES
FULL BODY
300X1200MM

RISER TILES
FULL BODY
200X1200MM

FULL BODY
VITRIFIED
STEP & RISER

Matt Finish



204 - Galaxy River

STEP



RISER

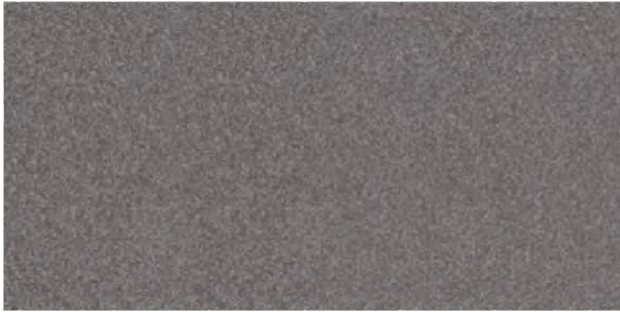


STEP TILES
FULL BODY
300X1200MM

RISER TILES
FULL BODY
200X1200MM

FULL BODY
VITRIFIED
STEP & RISER

Matt Finish



205 - Galaxy Nero

STEP



RISER



STEP TILES
FULL BODY
300X1200MM

RISER TILES
FULL BODY
200X1200MM

FULL BODY
VITRIFIED
STEP & RISER

Matt Finish



206 - Galaxy Crema

STEP



RISER



STEP
1200x300mm
RISER
1200x200mm



MOSAIC

Series

FULL 
BODY

FINISH
MATT / GLOSSY

STEP TILES
FULL BODY
300X1200MM

RISER TILES
FULL BODY
200X1200MM

**FULL BODY
MOSAIC SERIES**

Matt Finish



1001 - Mosaic Satin Nero

STEP



RISER



STEP TILES
FULL BODY
300X1200MM

RISER TILES
FULL BODY
200X1200MM

FULL BODY
MOSAIC SERIES

Matt Finish



1002 - Mosaic Satin Brown

STEP



RISER



STEP TILES
FULL BODY
300X1200MM

RISER TILES
FULL BODY
200X1200MM

**FULL BODY
MOSAIC SERIES**

Matt Finish



1003 - Mosaic Satin Fossil

STEP



RISER



STEP TILES
FULL BODY
300X1200MM

RISER TILES
FULL BODY
200X1200MM

FULL BODY
MOSAIC SERIES

Matt Finish



1004 - Mosaic Satin Grey

STEP



RISER



STEP TILES
FULL BODY
300X1200MM

RISER TILES
FULL BODY
200X1200MM

**FULL BODY
MOSAIC SERIES**

Matt Finish



1005 - Mosaic Satin White

STEP



RISER



STEP TILES
FULL BODY
300X1200MM

RISER TILES
FULL BODY
200X1200MM

FULL BODY
MOSAIC SERIES



Glossy Finish



1011 - Mosaic Polish Nero

STEP



RISER



STEP TILES
FULL BODY
300X1200MM

RISER TILES
FULL BODY
200X1200MM

**FULL BODY
MOSAIC SERIES**

Glossy Finish



1012 Mosaic Polish Brown



STEP TILES
FULL BODY
300X1200MM

RISER TILES
FULL BODY
200X1200MM

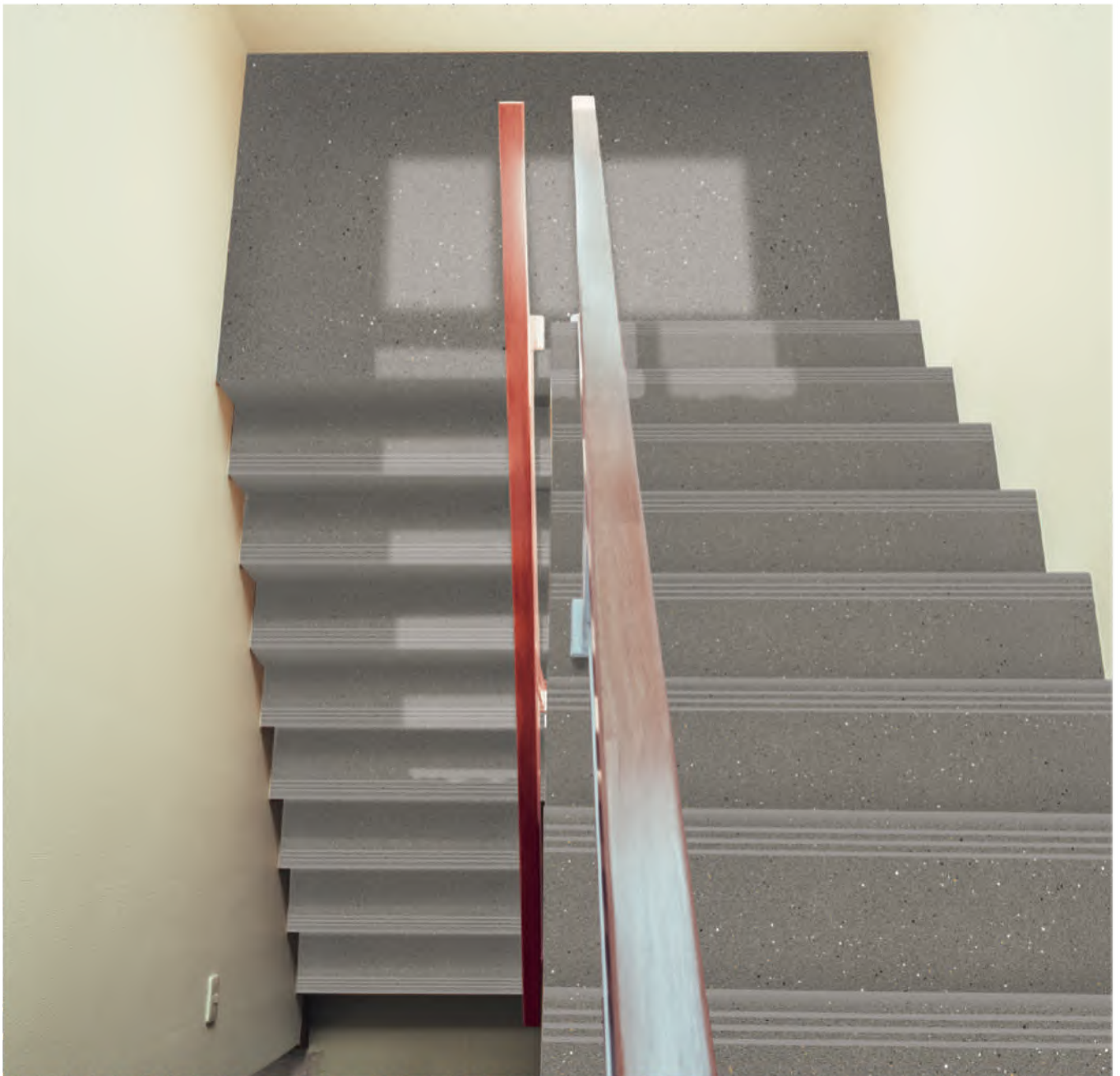
FULL BODY
MOSAIC SERIES



Glossy Finish



1013 Mosaic Polish Fossil



STEP TILES
FULL BODY
300X1200MM

RISER TILES
FULL BODY
200X1200MM

**FULL BODY
MOSAIC SERIES**

Glossy Finish



1014 Mosaic Polish Grey



STEP TILES
FULL BODY
300X1200MM

RISER TILES
FULL BODY
200X1200MM

FULL BODY
MOSAIC SERIES



Glossy Finish



1015 Mosaic Polish White

STEP



RISER



GVT

| PRODUCT | SIZE | PISCES | THICKNESS (mm - Approx) | WEIGHT (Kg. - Approx) |
|---------|------------------------|--------|----------------------------|--------------------------|
| Step | 1200x300mm (4 Feet) | 3 Pcs. | 9.5 - 10± | 21.0 KG. |
| Riser | 1200x200mm (4 Feet) | 3 Pcs. | 9.5 - 10± | 14.0 KG. |
| Step | 1000x300mm (3.25 Feet) | 4 Pcs. | 9.5 - 10± | 25.0 KG. |
| Riser | 1000x200mm (3.25 Feet) | 4 Pcs. | 9.5 - 10± | 16.5 KG. |
| Step | 900x300mm (3 Feet) | 4 Pcs. | 9.5 - 10± | 21.0 KG. |
| Riser | 900x200mm (3 Feet) | 4 Pcs. | 9.5 - 10± | 14.0 KG. |

FULL BODY

| | | | | |
|-------|------------------------|--------|-------------|----------|
| Step | 1600x300mm (5.25 Feet) | 3 Pcs. | 10.5 - 11 ± | 30.0 KG. |
| Riser | 1600x200mm (5.25 Feet) | 3 Pcs. | 10.5 - 11 ± | 20.5 KG. |
| Step | 1200x300mm (4 Feet) | 3 Pcs. | 10.5 - 11 ± | 25.0 KG. |
| Riser | 1200x200mm (4 Feet) | 3 Pcs. | 10.5 - 11 ± | 16.5 KG. |
| Step | 900x300mm (3 Feet) | 4 Pcs. | 10.5 - 11 ± | 24.0 KG. |
| Riser | 900x200mm (3 Feet) | 4 Pcs. | 10.5 - 11 ± | 16.0 KG. |

VOLVO

| | | | | |
|-------|--------------------|--------|-----------|----------|
| Step | 900x300mm (3 Feet) | 4 Pcs. | 9.5 - 10± | 21.0 KG. |
| Riser | 900x200mm (3 Feet) | 4 Pcs. | 9.5 - 10± | 14.0 KG. |

PIXEL

| | | | | |
|-------|---------------------|--------|-----------|----------|
| Step | 1200x300mm (4 Feet) | 3 Pcs. | 9.5 - 10± | 21.0 KG. |
| Riser | 1200x200mm (4 Feet) | 3 Pcs. | 9.5 - 10± | 14.0 KG. |

The
Largest
Manufacturer...